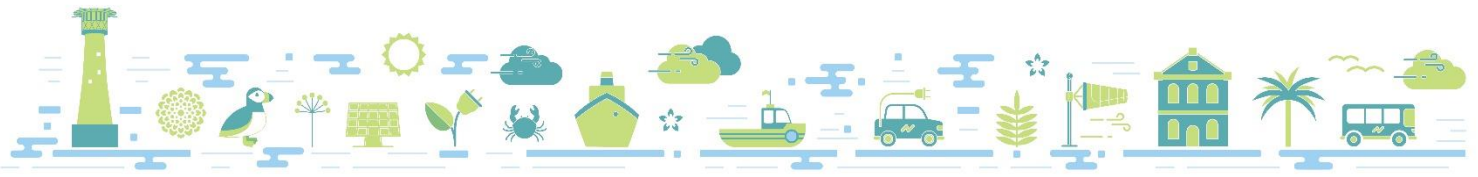




Smart  
Energy  
Islands



European Union  
European Regional  
Development Fund



# Owl Intuition Set Up Guide

## Three Phase Supply

### 1. Account Set-Up

Head to [www.owlintuition.com](http://www.owlintuition.com)

Click on create account:

The screenshot shows the Owl Intuition login interface. At the top is the logo 'OWL intuition'. Below it are two input fields: 'Username' and 'Password'. Under the password field is a checkbox labeled 'Remember Me'. A 'Login' button is positioned below the checkbox. At the bottom of the form, there are two links: 'Create Account' (which is circled in red) and 'Lost Password'.

Confirm that the Network Owl (device connected to wifi router or wifi booster) is connected:

- The green LED will be flashing with a triple blip pattern if the Network OWL is connected to the OWL server
- Click 'Confirm'





### Account Creation

Please confirm the Network OWL is connected to your network before proceeding. The green LED will be flashing with a triple blip pattern if the Network OWL is connected to the OWL server.

**IMPORTANT:** Please do not pair devices before creating your account. A setup wizard will guide you through the process of pairing devices after you log in. **Please do not follow the pairing process in the manuals for individual devices.**

2017 © 2 Save Energy Limited

[Manuals](#) | [Privacy Policy](#) | [Terms & Conditions](#)



Enter account details using the MAC ID noted on the Owl information sheet provided during the site survey and click create account. The MAC ID can also be found on the back of the network owl, it is the long number beginning in 44 located next to the bar code.

- o Ensure that the 'Account Exists' box is checked if a previous attempt to set up an account has been made

### Account Creation

System Type

A new Wizard will allow you to select the appropriate system type when setting up your other devices.

Network OWL MAC ID

Username

Account Exists

Password

Password Again

Email

Country

United Kingdom

Timezone

(GMT) Western Europe Time, London, Lisbon

Use Daylight Savings

\* Europe Only

Currency

GBP £

Postcode (First Part)

Please tick to confirm you have read and accept our [Terms & Conditions](#)





## 2. Pairing Network Owl to Transmitter

Once logged into account the Owl Intuition Configuration Wizard should pop up automatically. If this does not happen click on Wizard in the toolbar at the top of the screen.

- o Ensure that 'Electricity / Solar Monitoring' is selected on the configuration wizard and click 'start'

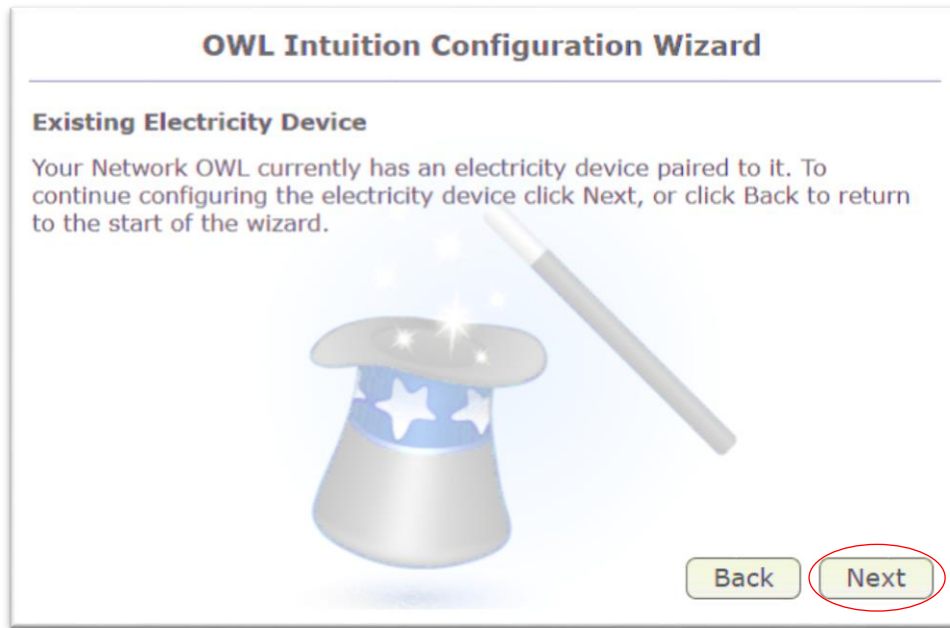
The screenshot displays the 'OWL Intuition Configuration Wizard' interface. At the top, there are navigation links for 'Devices', 'System', 'Wizard' (highlighted with a red circle), and 'Messages'. The main dashboard shows weather information (12°C Partly Cloudy, Humidity: 81%, Wind: 11 mph, Cloud Cover: 43%), system status (Intuition LC Demo, System Online), and energy usage statistics (Total Energy Used: 1.16 kWh Today, 13.8p kWh Yesterday, 372.1 kWh Last 7 Days, 1344.0 kWh Last 30 Days). The wizard window is open, showing an 'Introduction' screen with instructions to 'ADD new monitoring or control elements to your system' and to 'select an appropriate option below then click Start, or click Finish once all devices have been set up.' A dropdown menu is set to 'Electricity / Solar Monitoring'. The wizard has 'Finish' and 'Start' buttons.

### 2a) Owl Transmitter already paired?

If the Owl Transmitter (the transmitter is installed in meter cupboard) is already paired with the Network Owl you will see the below message:

- o Click 'Next' and move to step 3 of instructions

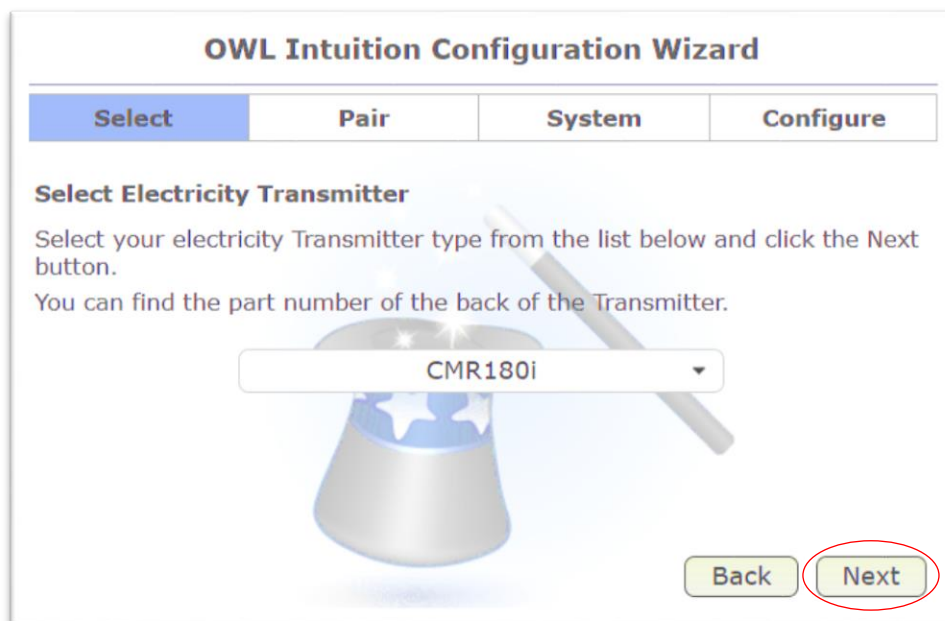




## 2b) Owl Transmitter not paired?

If the Owl Transmitter is **NOT** already paired with the Network Owl you will see the below message:

- o Ensure CMR180i is selected and click 'Next'



Follow instructions on screen to pair the devices

- o Click 'Next'



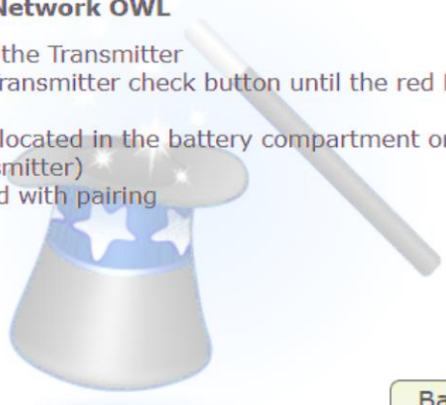


### OWL Intuition Configuration Wizard

Select	Pair	System	Configure
--------	------	--------	-----------

**Pair Transmitter To Network OWL**

- 1) Insert batteries into the Transmitter
- 2) Press and hold the Transmitter check button until the red LED starts to flash  
(The check button is located in the battery compartment or on the front depending on the Transmitter)
- 3) Click Next to proceed with pairing



Back Next

If the transmitter and network owl have successfully paired you will see a successful pairing screen

- o Click 'Next'

### 3. System Configuration

Select 'Intuition-lc (3 phase electricity)' from the drop down list and click 'Next'

### OWL Intuition Configuration Wizard

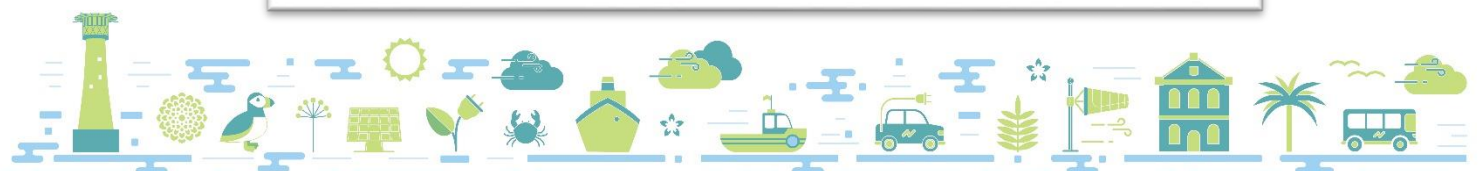
Select	Pair	System	Configure
--------	------	--------	-----------

**Select Electricity Monitoring System Type**

Select your electricity monitoring system type from the list below, then click Next to proceed.  
(Please note: the transmitter type determines the available system types supported)

Intuition-lc (3 phase electricity) ▾

Next





Change the voltage to '240' in the Electricity Settings, ensure Power Factor is set to '1.0' and click 'Next'

### OWL Intuition Configuration Wizard

Select	Pair	System	Configure
--------	------	--------	-----------

#### Configure Your Electricity Monitoring System

If required, the default voltages for this installation can be modified below.  
(Reading accuracy can be improved by using actual installation voltages.  
Power factor can be altered for fine calibration adjustments. If in doubt,  
leave default values unchanged)

Electricity Settings (Consumption)			
Voltage	<input type="text" value="240"/>	Power Factor	<input type="text" value="1.0"/>

If successful you should see the following or similar completion message:

- o Click 'Finish'

### OWL Intuition Configuration Wizard

Select	Pair	System	Configure
--------	------	--------	-----------

#### Configuring Network OWL

✔ Device successfully added to your Intuition system.





Smart  
Energy  
Islands



European Union  
European Regional  
Development Fund

You should now be able to see a consumption reading on your Owl dashboard:

